

Neutrix

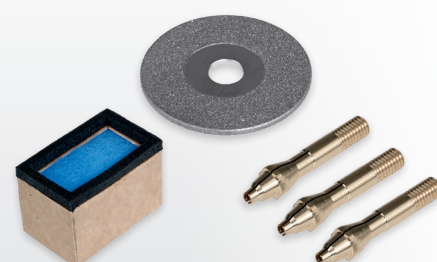
Electrode Grinding Machine

The Neutrix is a small, lightweight and therefore portable grinding device that can accurately grind reproducible quality grinds on tungsten electrodes centrally in the longitudinal direction.

A stand can be mounted for workshop use.



Neutrix with pedestal SW



Further accessories can be found in our **Accessory Catalogue**.

Stationary



Applications

- ▶ Tungsten electrode resharpening for TIG, plasma and orbital welding



Features

- ✔ Integrated dust exhaust
- ✔ Stepless adjustment of the point angle 15° - 180°
- ✔ Eccentric disc enables 3-fold utilisation of the diamond disc
- ✔ Short grinding time - only 0.3mm consumption per grinding process due to grinding gauge
- ✔ Speed control for optimum grinding speed
- ✔ Grinding of tungsten electrodes up to 15mm is possible with special collets

Technical data

	Neutrix
Motor	0.12 kW 8,000 - 22,000 rpm
Energy	230 V, 50/60 Hz
LpA sound pressure level	88.8 dB/A
Vibration value	5 m/s ²
Diamond disk	ø 40 mm
Weight	3.1 kg
Item no.	10921

Options

- ✔ Stand S
- ✔ Pedestal SW (with tool deposit)
- ✔ Neutrix S with fixed pedestal and large dust filter

Delivery contents

- ✔ Allen key 2 and 4 mm
- ✔ Transport case
- ✔ Electrode holder with collet sections ø 1.6 / 2.4 / 3.2 mm
- ✔ Disposal bag for single-use filters
- ✔ Open-end spanners SW 13/17 and 4 mm
- ✔ Diamond grinding disk
- ✔ Operating manual