

Accessories suitable for

KKE 1 | KKE 2 | ASO 600-ASL



Chamfer cutters without bore



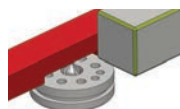
10372



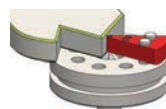
11134



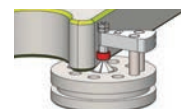
10384



Guide ruler

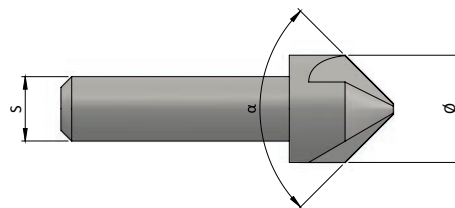


Guide ball bearing



Exchange insert

Field of application	α	\emptyset	S	Z	Coating	FL	fixed or height adjustable [mm]				with guide ball bearing [mm]		No.
							R 0,8	R 1,2	R 1,5	R 2,1	$\emptyset 3$	$\emptyset 4$	
Alu, Steel	90°	6	6	3	No	X	X	X	X	X	X	X	10372
Alu, Steel	90°	6	6	3	No	X	X	X	X	X	X	X	70309
Alu, Steel	60°	6	6	3	No	X	X	X	X	X	X	X	26208
Alu, Steel	120°	6	6	3	No	X	-	X	X	X	X	X	39954
Alu	90°	6	6	3	No	X	X	X	X	X	X	X	10377
Steel	90°	6	6	5	Yes	X	X	X	X	X	X	X	70308
Steel	90°	6	6	5	Yes	X	X	X	X	X	X	X	11134
Stainless steel	90°	6	6	5	Yes	X	X	X	X	X	X	X	10378
Alu, Steel	90°	10	6	3	Nein	X	X	X	X	X	X	X	10384



Chamfer cutters with fixed guide pin



10948

Field of application	α	\emptyset	S	Z	Coating	\emptyset Guide pin	No.
Alu, Steel	90°	6	6	3	No	2	10948



* Explanation of the abbreviations: α = point angel, R = radius, S = shaft diameter, Z = teeth, FL = guide ruler, FK = guide ball bearing, FZ = guide pin

Accessories suitable for

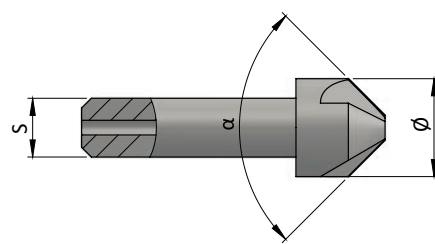
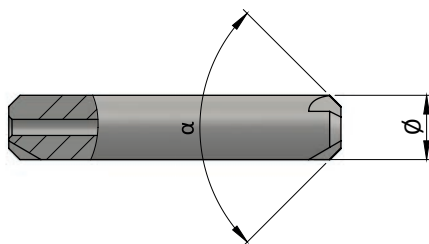
KKE 1 | KKE 2 |
ASO 600-ASL



Chamfer cutters with bore



Field of application	α	\emptyset	S	Z	Coating	FZ 2,6	FK 3	FK 4	FK 5	FK 6	No.
Alu, Steel	90°	6	6	3	No	X	X	X	X	-	10374
Alu	90°	6	6	3	No	-	-	X	X	-	10375
Steel	90°	6	6	5	Yes	-	-	X	X	-	39041
Stainless steel	90°	6	6	5	Yes	-	-	X	X	-	43252
Laser-edge	90°	6	6	20	Yes	-	-	X	X	-	41885
Alu, Steel	90°	10	6	3	No	X	X	X	X	X	10386
Alu	90°	10	6	3	No	-	-	X	X	X	47698
Alu	130°	10	6	3	No	-	-	X	X	X	57622
Alu	140°	10	6	3	No	-	-	X	X	X	57624
Steel	90°	10	6	6	Yes	-	-	X	X	X	36828
Steel	120°	10	6	5	Yes	-	-	X	X	X	44908
Stainless steel	60°	10	6	5	Yes	-	-	X	X	X	23575
Stainless steel	90°	10	6	5	Yes	-	-	X	X	X	45920
Steel <65 HRC	90°	10	6	20	Yes	-	-	-	X	X	38344
Steel <65 HRC	120°	10	6	20	Yes	-	-	-	X	X	71231



* Explanation of the abbreviations: α = point angel, R = radius, S = shaft diameter, Z = teeth, FL = guide ruler, FK = guide ball bearing, FZ = guide pin

Accessories suitable for

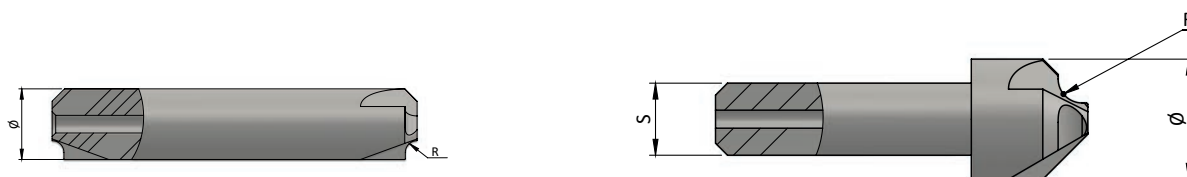
KKE 1 | KKE 2 |
ASO 600-ASL



Radius cutters with bore



Field of application	α	\emptyset	S	Z	Coating	FZ 2,6	FK 3	FK 4	FK 5	FK 6	No.
Alu	0,5	10	6	3	No	-	-	X	-	-	62244
Alu	1,0	6	6	3	No	-	X	-	-	-	67584
Alu	1,5	6	6	3	No	-	X	-	-	-	67585
Alu	2,0	10	6	3	No	-	-	X	-	-	62247
Alu	2,5	10	6	5	No	-	-	X	-	-	62248
Alu	3,0	10	6	5	No	-	-	X	-	-	62249
Steel	0,5	6	6	4	Yes	-	X	-	-	-	31363
Steel	1,0	6	6	5	Yes	-	X	-	-	-	29239
Steel	1,5	6	6	4	Yes	-	X	-	-	-	67586
Steel	2,0	10	6	4	Yes	-	-	X	-	-	50478
Steel	2,5	10	6	4	Yes	-	-	X	-	-	62242
Steel	3,0	10	6	5	Yes	-	-	X	-	-	62243
Stainless steel	0,5	6	6	6	Yes	-	-	X	-	-	43212
Stainless steel	1,0	6	6	5	Yes	-	X	-	-	-	17517
Stainless steel	1,5	6	6	5	Yes	-	X	-	-	-	21383
Stainless steel	2,0	10	6	5	Yes	-	-	X	-	-	65169



* Explanation of the abbreviations: α = point angel, R = radius, S = shaft diameter, Z = teeth, FL = guide ruler, FK = guide ball bearing, FZ = guide pin

Accessories suitable for

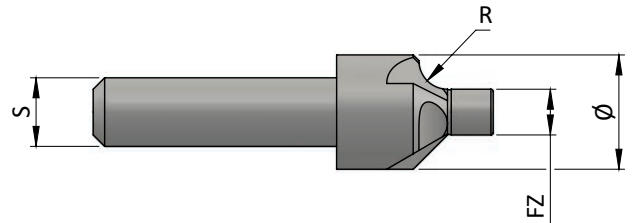
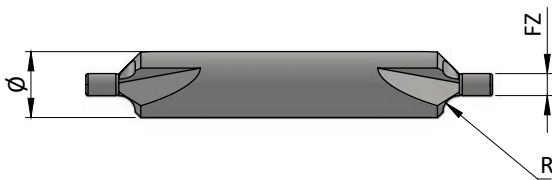
KKE 1 | KKE 2 |
ASO 600-ASL



Radius cutters with fixed guide pin



Field of application	α	\emptyset	S	Z	Coating	\emptyset Guide pin	No.
Alu, Plastic, Steel	0,4	6	6	3	No	2	44193
Alu, Plastic, Steel	1,0	6	6	3	No	2	37227
Alu, Plastic, Steel	1,5	6	6	3	No	2	10382
Alu, Plastic	2,0	10	6	2	No	4	38197
Alu, Plastic	3,0	12	6	2	No	4	38198
Alu, Plastic	4,0	14	6	2	No	4	38199
Alu, Plastic	5,0	16	6	2	No	4	45046



Flush milling cutter with bore



Field of application	α	\emptyset	S	Z	Coating	FZ 2,6	FK 3	FK 4	FK 5	FK 6	No.
Alu, Steel	0°	5	6	4	No	-	-	-	X	-	17528
Alu, Steel	0°	6	6	4	No	-	-	-	-	X	17526

* Explanation of the abbreviations: α = point angel, R = radius, S = shaft diameter, Z = teeth, FL = guide ruler, FK = guide ball bearing, FZ = guide pin

Accessories suitable for

KKE 1 | KKE 2 |
ASO 600-ASL



Backward cutters



10862

Field of application	α	\emptyset	S	Z	Coating	No.
Steel, Stainless steel	- 90°	14	6	6	Yes	10862

Prism cutters for prismatic guide



57669

27823

Field of application	α	\emptyset	S	Z	Coating	No.
Alu	180°	8	8	3	No	57669
Steel, Stainless steel	180°	8	8	4	Yes	27823

Guide pin and guide ball bearings



71002



71003



71004



71005



71006

Description	Details	No.
Guide pin	\emptyset 2,6 mm	71002
Guide ball bearing	\emptyset 3,0 mm	71003
Guide ball bearing	\emptyset 4,0 mm	71004
Guide ball bearing	\emptyset 5,0 mm	71005
Guide ball bearing	\emptyset 6,0 mm	71006

* Explanation of the abbreviations: α = point angel, R = radius, S = shaft diameter, Z = teeth, FL = guide ruler, FK = guide ball bearing, FZ = guide pin

Accessories suitable for

KKE 1 | KKE 2 |
ASO 600-ASL



Accessories



Description	Details	No.
Protection cap	for backward cutters, bore \varnothing 16 mm	50616
Guide finger	bore \varnothing 8 mm, R0,8 mm, fixed	10407
Guide finger	bore \varnothing 8 mm, R1,2 mm, fixed	47383
Guide finger	bore \varnothing 8 mm, R1,5 mm, fixed	52833
Guide finger	bore \varnothing 8 mm, R2,1 mm, fixed	47384
Guide finger height-adjustable	bore \varnothing 12 mm, R0,8 mm, R1,2 mm, R1,5 mm, R2,1 mm	27058
Insert ring	bore \varnothing 8 mm	10410
Insert ring	bore \varnothing 12 mm	10413
Wet/dry vacuum cleaner	AERO 21-21 PC	55611
Adapter suction socket	Alu, for AERO 21-21 PC	49630
Tool box	for contour cutters	35170
Socket wrench	wrench size 3,0	45407
Open end wrench	wrench size 3,0	71279
Prismatic guide	300 mm, for prism cutters \varnothing 8 mm	32024
Prismatic guide	300 mm, for prism cutters \varnothing 8 mm	34553

Spare parts



Description	Details	No.
Insert ring	bore \varnothing 12mm	70291
Exchange insert	R0,8 for height-adjustable guide finger	69692
Exchange insert	R1,2 for height-adjustable guide finger	67704
Exchange insert	R1,5 for height-adjustable guide finger	67705
Exchange insert	R2,1 for height-adjustable guide finger	67706
Exchange insert	with FK 3 for height-adjustable guide finger	29240
Exchange insert	with FK 4 for height-adjustable guide finger	67703
Collet	\varnothing 6 mm	23420
Collet	\varnothing 8 mm	24093
Union nut		34702
Carbon brush, old		26961
Carbon brush, new		69141
Union nut		26284
Set of Drive belts		4932