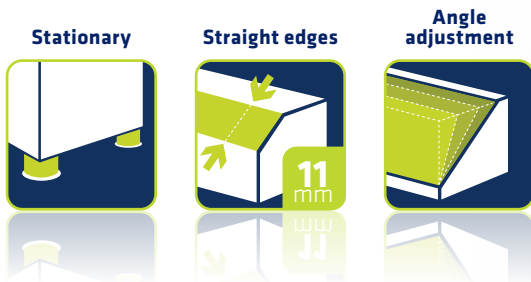


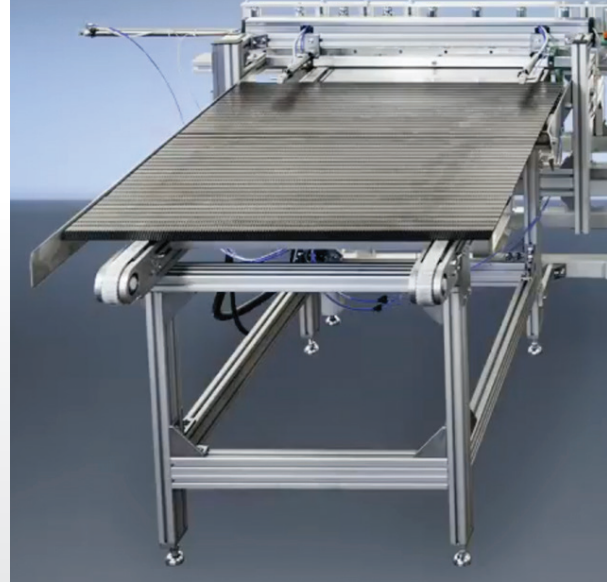
# WKF 170

## Chamfering Machine, angle adjustable

The perfect machine for chamfering small to mid-size workpieces and bar material. Thanks to its angle adjustment from 15° – 60°, it is mainly used for welding seam preparation.



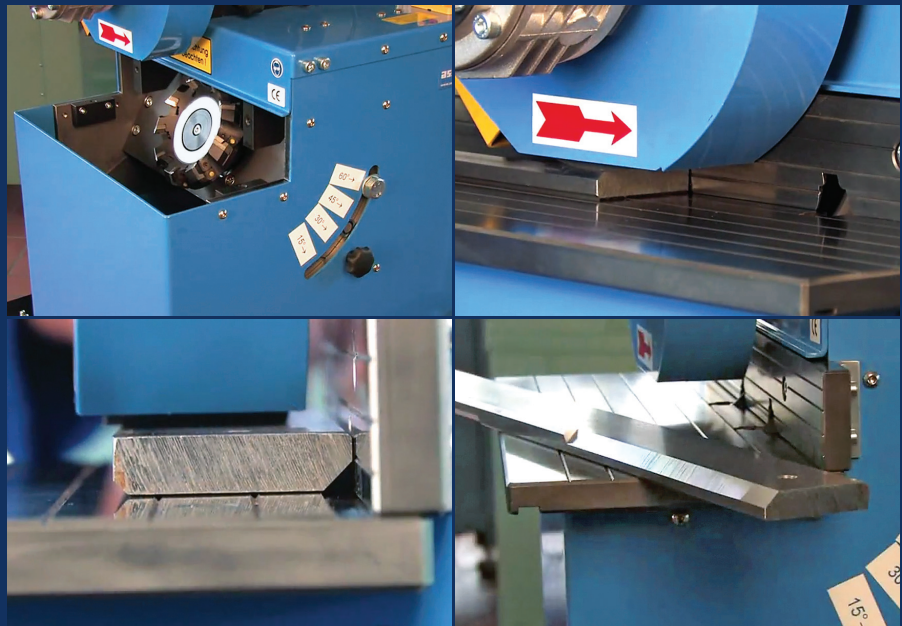
## Automatic Chamfering Machine ZE 2000/2 from ASSFALG

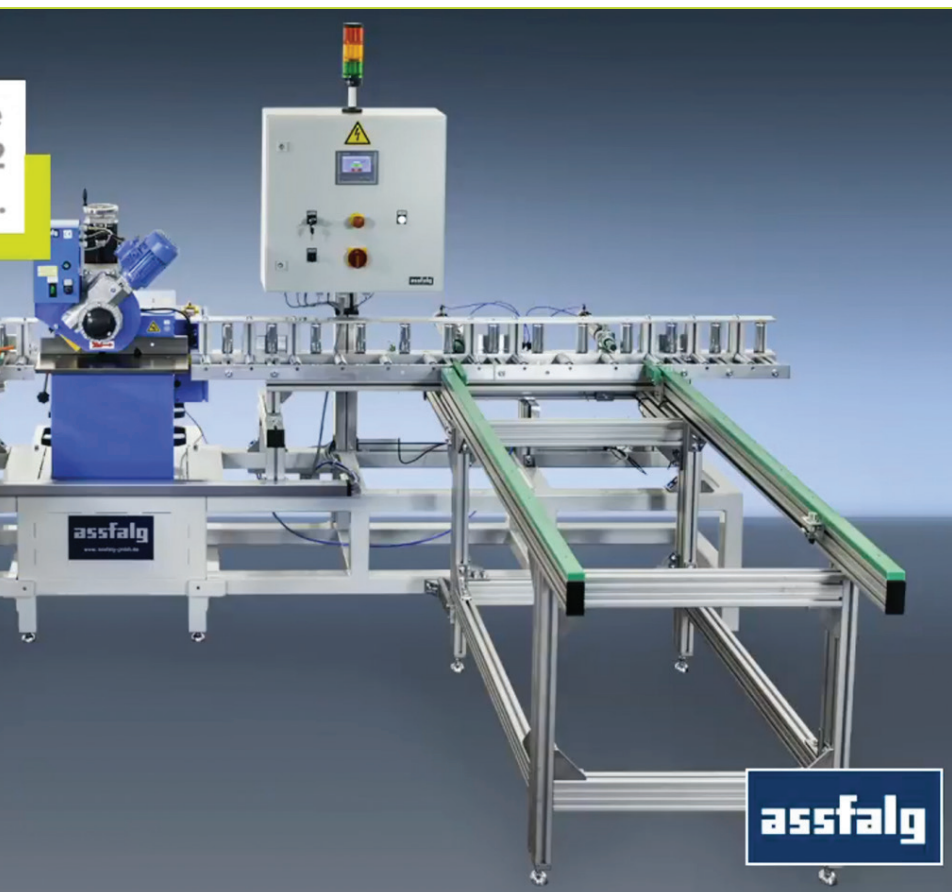


WKF 170 as automatic chamfering machine with feed module and roller guideway

### Applications

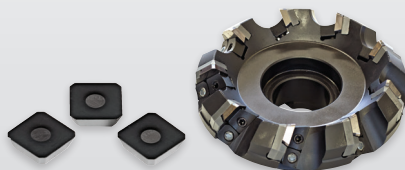
- ▶ Minimum workpiece thickness 1 mm
- ▶ Can be used for steel, max. 1,000 N/mm<sup>2</sup>, aluminum, brass, copper, plastic, from soft plastic to acrylic glass, wood and much more
- ▶ Deburring workpieces up to welding seam preparation





assfalg

Further accessories can be found  
in our **Accessory Catalogue**.



### Professional advantages

- ▶ Simple and fast angle adjustment
- ▶ Consistent high surface quality
- ▶ Automatic feed facilitates chamfering
- ▶ Sharp-edged chamfering possible  
i.e. a 5 mm x 45° chamfer can be  
applied to a 5 mm thick workpiece

### Features

- ⌚ Angle adjustment from 15° – 60°  
(Quick adjustment with plug-in bolt in  
5° steps)
- ⌚ Chamfer adjustment by micrometer  
button
- ⌚ Speed control for processing different  
materials
- ⌚ Easy tool change
- ⌚ Hardened and polished guide rails
- ⌚ Soft cutting pressure

### Options

- ⌚ Mobile undercarriage with big rubber  
rollers and integrated swarf drawer
- ⌚ Lateral stop for processing the front  
side
- ⌚ Longitudinal stop for secure guidance  
of small series production parts
- ⌚ Automatic feed for single-part and  
series production and processing bar  
materials
- ⌚ Roller conveyors for extending the  
guide rails

### Delivery contents

- ⌚ Torx key T 25
- ⌚ Plane cutter head with cutting inserts
- ⌚ Operating manual

### Technical data

Motor	3.0 kW   1,000 – 4,000 rpm
Energy	400 V, 50/60 Hz
Maximum chamfer width	11 mm
Angular adjustment	15° – 60°
Dimensions (LxWxH)	500 × 500 × 550 mm
Tabletop (LxW)	500 × 180 mm
Weight	103 kg
Item no.	54307

WKF 170 ⌚



WKF 170 with feed module and  
undercarriage