

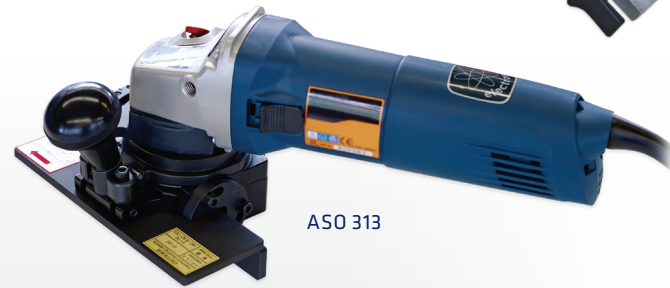
ASO 312 | ASO 313

Chamfering Machine, handheld, electric | pneumatic

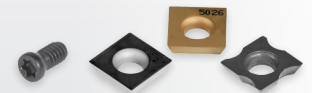
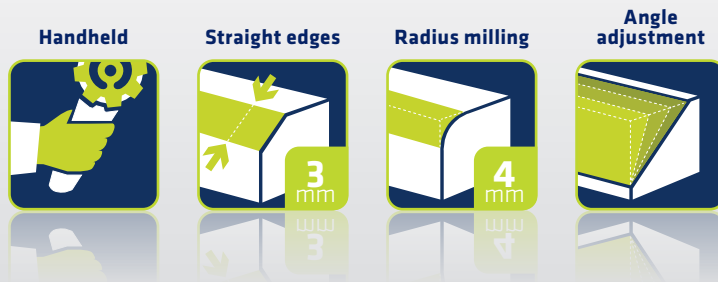
The compact and robust, handheld Chamfering Machines are particularly suitable for chamfering flat workpieces. Stable, screwed cutting inserts guarantee long tool life.



ASO 312



ASO 313



Further accessories can be found in our **Accessory Catalogue**.

Applications

- ▶ Chamfering of flat workpieces made of steel, stainless steel, cast iron, aluminium, brass, and plastic
- ▶ Chamfering of straight edges
- ▶ Preparation of Quick change of the carbide inserts welding edges
- ▶ Rounding edges



Features

- ✔ Absolutely burr-free cutting
- ✔ Clean and consistent processing of component parts and series
- ✔ Quick changeover or replacement of the carbide-cutting inserts
- ✔ Wear-resisting, hardened guide rails
- ✔ Long tool life of the cutting inserts
- ✔ Adjustable according to right- or left-hander
- ✔ Angle-adjustable rails

Options

- ✔ Radius inserts R2 - R4 mm

Delivery contents

- ✔ Allen key 3 mm
- ✔ Allen key 4 mm (only with ASO 313)
- ✔ Torx key T 15
- ✔ Handle grip
- ✔ Cutter head with cutting inserts
- ✔ Swarf box (only with ASO 313)
- ✔ Operating manual

Technical data

	ASO 312	ASO 313
Motor	0.5 kW 13,000 rpm	0.9 kW 10,000 rpm
Energy	900l / min 6 bar	230 V, 50/60 Hz
Maximum chamfer width	3 mm	3 mm
Guide rails	hardened	hardened
Angular adjustment	15° - 45°	15° - 45°
Weight	2.9 kg	3.4 kg
Item no.	26153	32938