

# MSQ Magsquare | MagWheel | MagMount

## Magnetic Workholding Tool

MSQ Magsquare is a versatile workholding and fixturing magnet. The magnetic grip is powerful on the 3 long sides. A simple 180° turn of the knob to switch ON / OFF. Pretapped holes on 4 sides for mounting.

MSQ is assembled in angle A90 and BA.

The Magwheel is a rollable magnetic holder. It offers a powerful connection for drive units on any steel surface that requires flat, vertical or inverted movement.

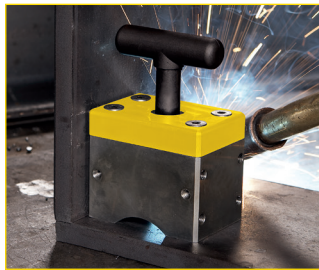
The Magmount can be used as a magnetic holder, for example for stands or fixtures.



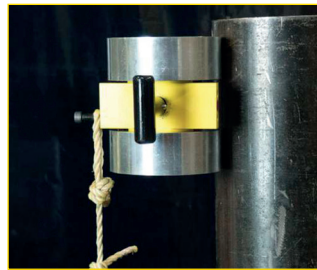
MSQ Magsquare



MSQ Magsquare



MSQ Magsquare



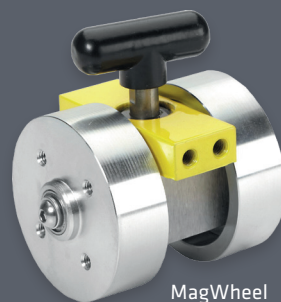
MagWheel



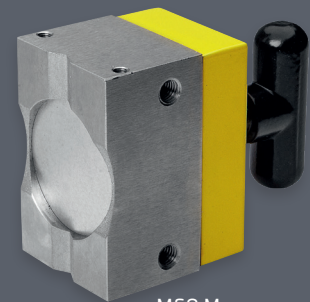
MagMount

## Features

- ✔ Magnets turns completely OFF and stays clean
- ✔ Usable for round and square work-pieces
- ✔ Magnetic power is powerful on 3 sides, only weak on the 2 short sides
- ✔ Pretapped holes on 4 sides for quick mounting
- ✔ Great for making own fixtures
- ✔ MagWheel applications: Positioning and guiding, sheet metal feeding, tube handling, assembly and manufacturing



MagWheel



MSQ Magsquare

## Technical data

	Dimensions [LxWxH]	Adhesive force	Weight	No.	Price
	[mm]	[kg]	[kg]		[€]
MSQ 165	48 x 31 x 65	68	0,3	61939	50,00
MSQ 400	64 x 42 x 90	181	0,9	60971	120,00
MSQ 600	75 x 52 x 106	272	1,4	60972	180,00
MSQ 1000	72 x 108 x 147	454	3,4	60973	400,00
MagWheel 150	68 x 52 x 72	29	1,0	64398	176,00
MagWheel 600	101 x 92 x 122	132	3,0	64399	436,89
MagMount 235	98 x 68 x 45	106	0,5	64649	120,00

Prices are subject to change