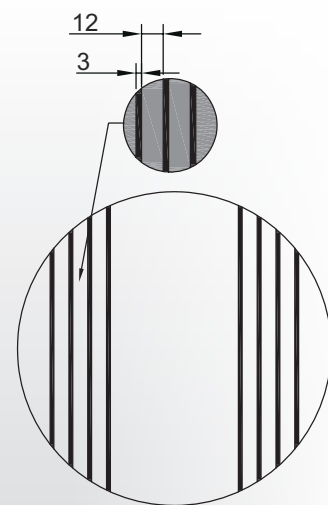
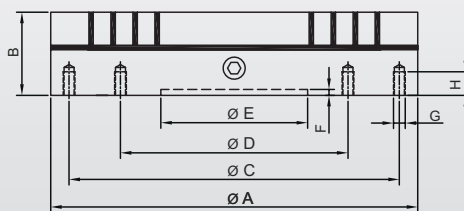
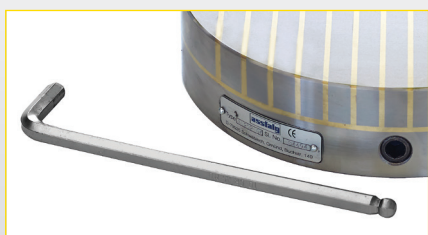
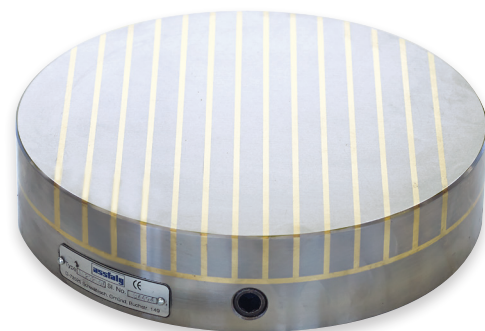


Permamax

Permanent Magnetic Chucks

The round Permamax is a very strong Permanent Magnetic Chuck with parallel pole pitch. It is manually switched. It is universally suitable for all kind of ferromagnetic workpieces.



Application

- ▶ Universal use, also for small workpieces
- ▶ Best suitable for flat grinding, internal or external grinding or turning or hard turning

Features

- ⚙ High power and liquid-tight
- ⚙ The surface can be machined down by 2mm and partially drilled up to 8 mm depth (5 mm at $D \leq 130$ mm)
- ⚙ Mechanically switchable
- ⚙ Workpieces can be clamped stress-free and fast
- ⚙ All-around processing as only one side is clamped magnetically
- ⚙ Adhesive force: up to 140 N/cm² with pole pitch 12 + 3 mm

Technical data

	Dimensions [mm]								Weight [kg]	No.
	A	B	C	D	E	F	G	H		
PMR 10	100	55	-	75	50	5	M6	12	3	57990
PMR 16	160	55	120	80	50	5	M6	12	9	57991
PMR 20	200	55	180	110	60	5	M6	12	13	57992
PMR 25	250	55	220	140	80	5	M6	12	21	57993
PMR 30	300	55	260	180	150	6	M6	16	30	57994
PMR 35	350	55	300	220	170	6	M8	16	41	57995
PMR 40	400	55	340	260	200	8	M8	16	84	57996