

HSM | HSM ECO

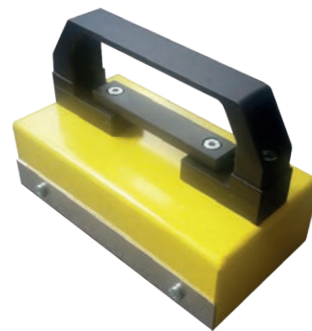
Manual Sorting Magnets | Magnetic Sweeper

The manual sorting magnet is preferably used for separating of bulk material and lifting of small parts such as bolts, nuts, nails or chips.

The magnetic sweeper attracts all magnetic chips, also at difficult access places. By pulling out the handle the chips fall down.



HSM-eco



HSM



Magnetic sweeper

Applications

- For holding of small parts

Features

- Inexpensive
- Long-lived construction
- Light and compact design



Technical data	Supporting surface	Overall height	Weight	Item no.
	[mm]	[mm]	[kg]	
HSM	188x105	130	1,7	64760
HSM ECO	155x135	205	2,6	21899
Magnetic Sweeper	Ø 25	L=380	0,5	42295